

Anti-OSMR Reference Antibody (vixarelimab)
Recombinant Antibody
Catalog # APR10201**Specification**

Anti-OSMR Reference Antibody (vixarelimab) - Product Information

| | |
|-------------------|----------------------------|
| Application | FC, Kinetics, Animal Model |
| Primary Accession | Q99650 |
| Reactivity | Human |
| Clonality | Monoclonal |
| Isotype | IgG4SP |
| Calculated MW | 145 KDa |

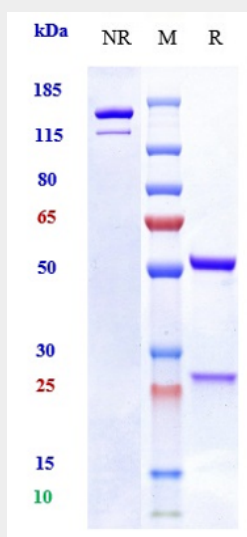
Anti-OSMR Reference Antibody (vixarelimab) - Additional Information**Target/Specificity**
OSMR**Endotoxin**
< 0.001EU/ µg,determined by LAL method.**Conjugation**
Unconjugated**Expression system**
CHO Cell**Format**
Purified monoclonal antibody supplied in PBS, pH6.0, without preservative.This antibody is purified through a protein A column.**Anti-OSMR Reference Antibody (vixarelimab) - Protein Information****Name** OSMR**Synonyms** OSMRB**Function**
Associates with IL31RA to form the IL31 receptor. Binds IL31 to activate STAT3 and possibly STAT1 and STAT5. Capable of transducing OSM-specific signaling events.**Cellular Location**
Membrane; Single-pass type I membrane protein**Tissue Location**
Expressed in keratinocytes (at protein level) (PubMed:21261663). Expressed at relatively high levels in all neural cells as well as fibroblast and epithelial cells (PubMed:8999038)

Anti-OSMR Reference Antibody (vixarelimab) - Protocols

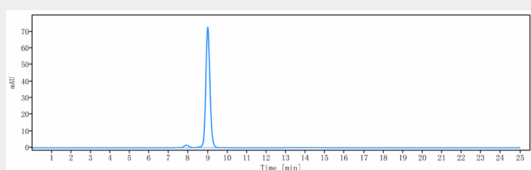
Provided below are standard protocols that you may find useful for product applications.

- [Western Blot](#)
- [Blocking Peptides](#)
- [Dot Blot](#)
- [Immunohistochemistry](#)
- [Immunofluorescence](#)
- [Immunoprecipitation](#)
- [Flow Cytometry](#)
- [Cell Culture](#)

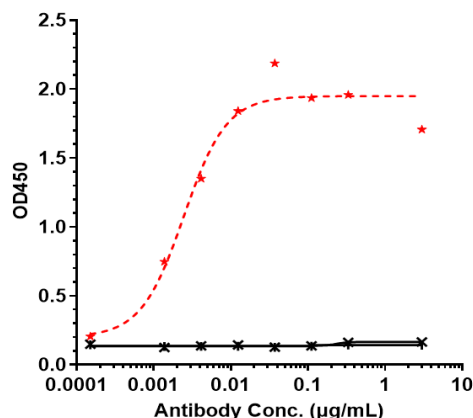
Anti-OSMR Reference Antibody (vixarelimab) - Images



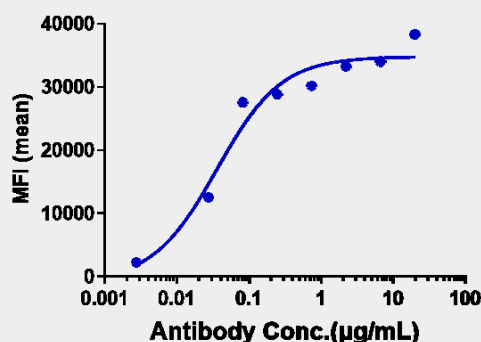
Anti-OSMR Reference Antibody (vixarelimab) on SDS-PAGE under reducing (R) condition. The gel was stained with Coomassie Blue. The purity of the protein is greater than 95%



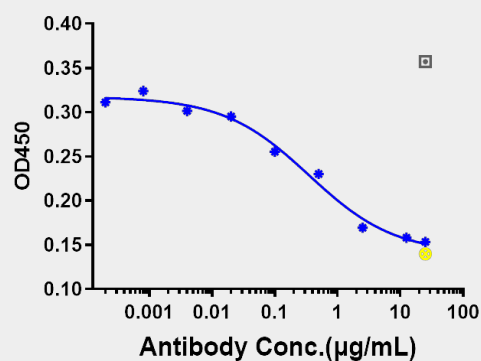
The purity of Anti-OSMR Reference Antibody (vixarelimab) is more than 96.9%, determined by SEC-HPLC.



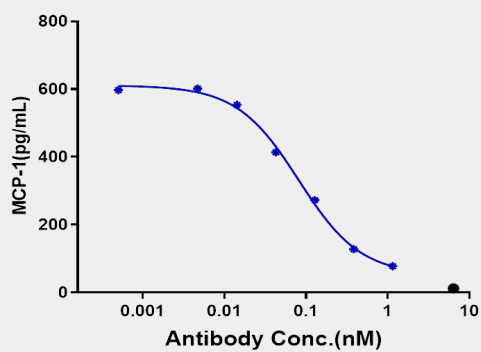
Immobilized human OSMR His at 2 µg/mL can bind Anti-OSMR Reference Antibody (vixarelimab) $EC_{50}=0.0024$ µg/mL



Human OSMR HEK293 cells were stained with Anti-OSMR Reference Antibody (vixarelimab) and negative control protein respectively, washed and then followed by PE and analyzed with FACS, $EC_{261}=0.0359$ µg/mL



Anti-OSMR Reference Antibody (vixarelimab) P-STAT3 Assay was evaluated using NHDF. The IC_{50} was approximately 0.3493 nM.



Anti-OSMR Reference Antibody (vixarelimab) MCP-1 secretion was evaluated using NHDF. The IC50 was approximately 0.0812 nM.